

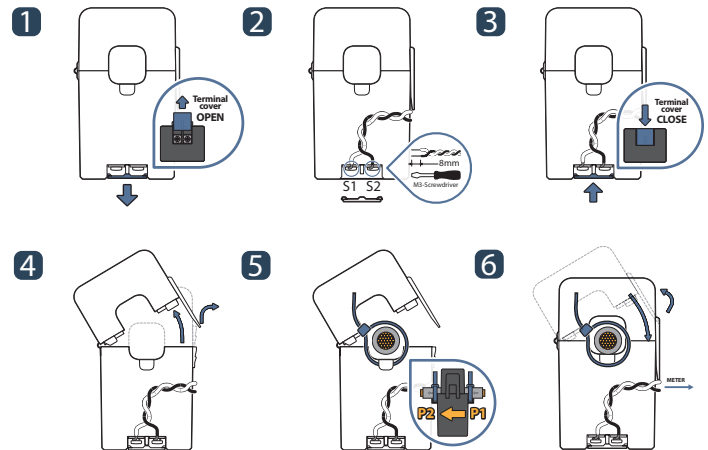


SPLIT-CORE CURRENT TRANSFORMER

JC36S-1/2/3 series



HOW TO USE



The split-core current transformer design is used for energy efficiency monitoring and automation applications. This includes sub-metering cost allocation, dynamic energy consumption and peak load analysis. The JC series of current transformer is simple to use, compact split-core design which is easily installed for metering applications. This is ideal for distributed measurement systems and can be retro-fitted into existing installations and non-interruptible equipment as there is no requirement for disconnection and reconnection of wiring.

APPLICATIONS

- Energy sub - meter
- Power meters
- Power quality monitoring
- HVAC&Pumps, etc
- Distributed measurement system

FEATURES

- Nylon-spring, output-terminal, secure locking hinge, one-touch structure makes easy to install to the existent equipments such as a power distribution boards.
- Isolated plastic case recognized according to UL94-V0
- UL / EN 61010 -1 certified

BENEFITS

- Small-size, light-weight
- Simple Installation
- Over-Voltage protection circuit is installed.

NOTICE

- Core contact surface is waterproofed, however if it gets rusty, you could reuse after removing rusts with spraying WD-40 or CRC5-56 on the rusted side.
- Do not use any other chemicals except WD-40 or CRC5-56 on housing or any other parts.
- Please use only the original output screws. Not recommended to replace it with anything else.
- Customizing output lead wire

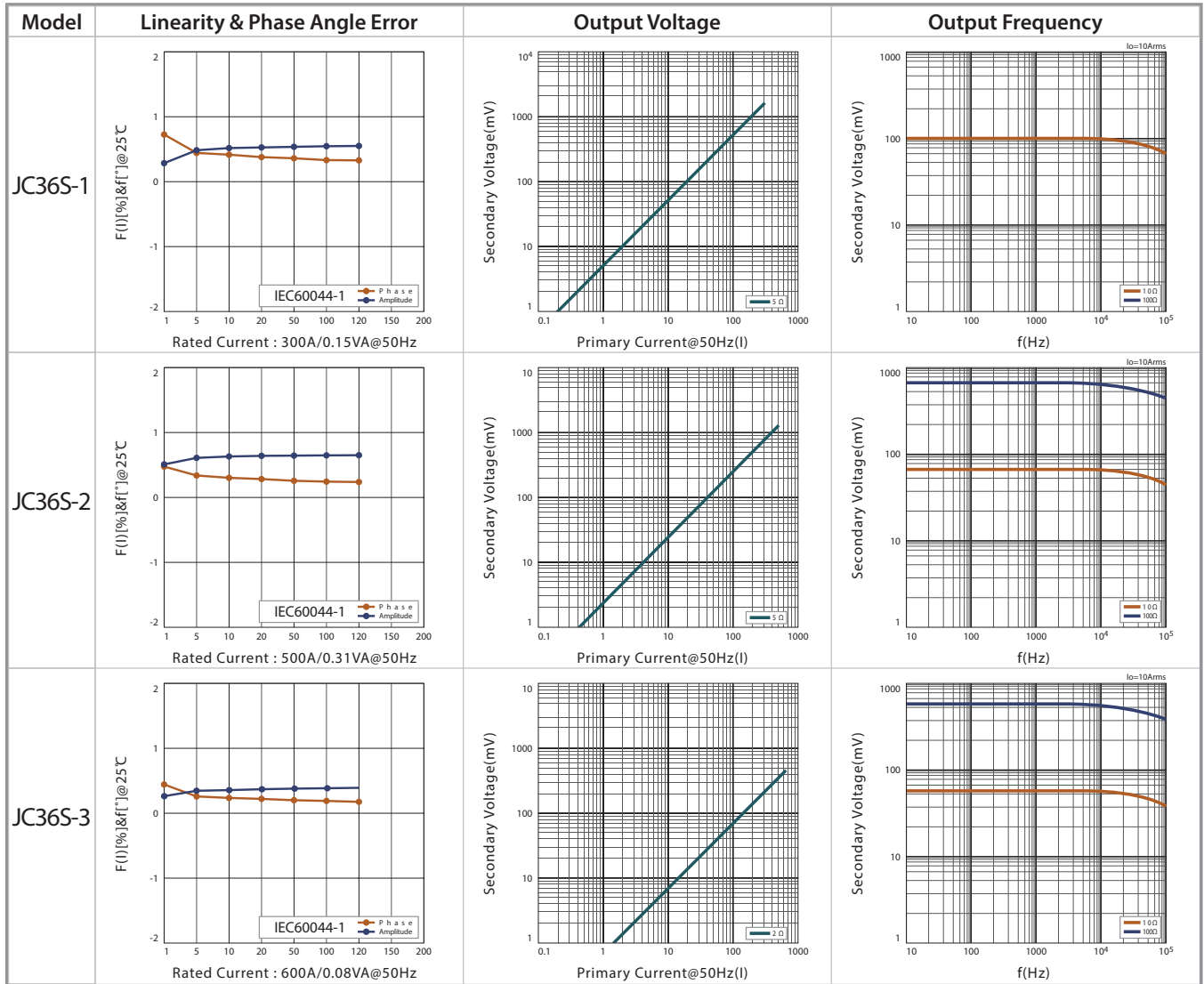
SPECIFICATION

(F=50/60Hz)

Model	JC36S-1 Ø36	JC36S-2 Ø36	JC36S-3 Ø36
Current Ratio	300A/300mA	500A/250mA	600A/200mA
Current Range	0.1~300A (RL=5Ω)	0.1~500A (RL=5Ω)	0.1~620A (RL=2Ω)
Max Continuous Current	400A	600A	650A
Nominal Phase Angle Error	+0.5±0.5°	+0.5±0.5°	+0.5±0.5°
Nominal Linearity Error	±1%	±1%	±1%
Turns Ratio	1000:1(Winding : 990T)	2000:1(Winding : 1970T)	3000:1(Winding : 2955T)
DCR	7±2Ω	33±4Ω	58±7Ω
Protection Level	3.0V0-P	3.0V0-P	3.0V0-P
Insulation Category	CATIII		
Operating Condition	-20°C~+50°C, ≤85%RH, No condensation, In-house & Any direction installable		
Storage Condition	-30°C~+90°C, ≤85%RH, No condensation		



ACCURACY DATA



APPLICATIONS / DIMENSIONS

