

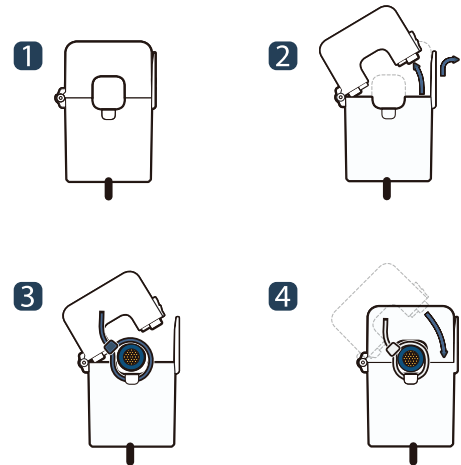


SPLIT-CORE CURRENT TRANSFORMER

JSXXFL-XXX/XXXmA series



HOW TO USE



JS series of split-core current transformer offers XXXmA at secondary from sensed primary current for metering application. Without using secondary CT inside of meter, it enables one meter to be adopted for various current rating by only changing primary CT so it makes compact meter design and reduces developing cost. Also, over-voltage protection circuit is included to offer safe, fast and cost effective installation. Especially JS10FL can be installed at secondary of 5A output primary CT to compare meter's accuracy.

APPLICATIONS

- Energy sub - meter
- Power meters
- Power quality monitoring
- HVAC&Pumps, etc
- Distributed measurement system

FEATURES

- Output-lead-wire, secure locking hinge, one-touch structure make easy to install to the existent equipments such as a power distribution boards.
- Isolated plastic case recognized according to UL94-V0
- UL / EN 61010 - 1 certified

BENEFITS

- Small-size, light-weight
- Simple Installation
- Over-Voltage protection circuit is installed.

NOTICE

- If you impact the core contact surface, internal core material could be damaged.
- Additionally, CTs are deliverable with customized output lead cable.

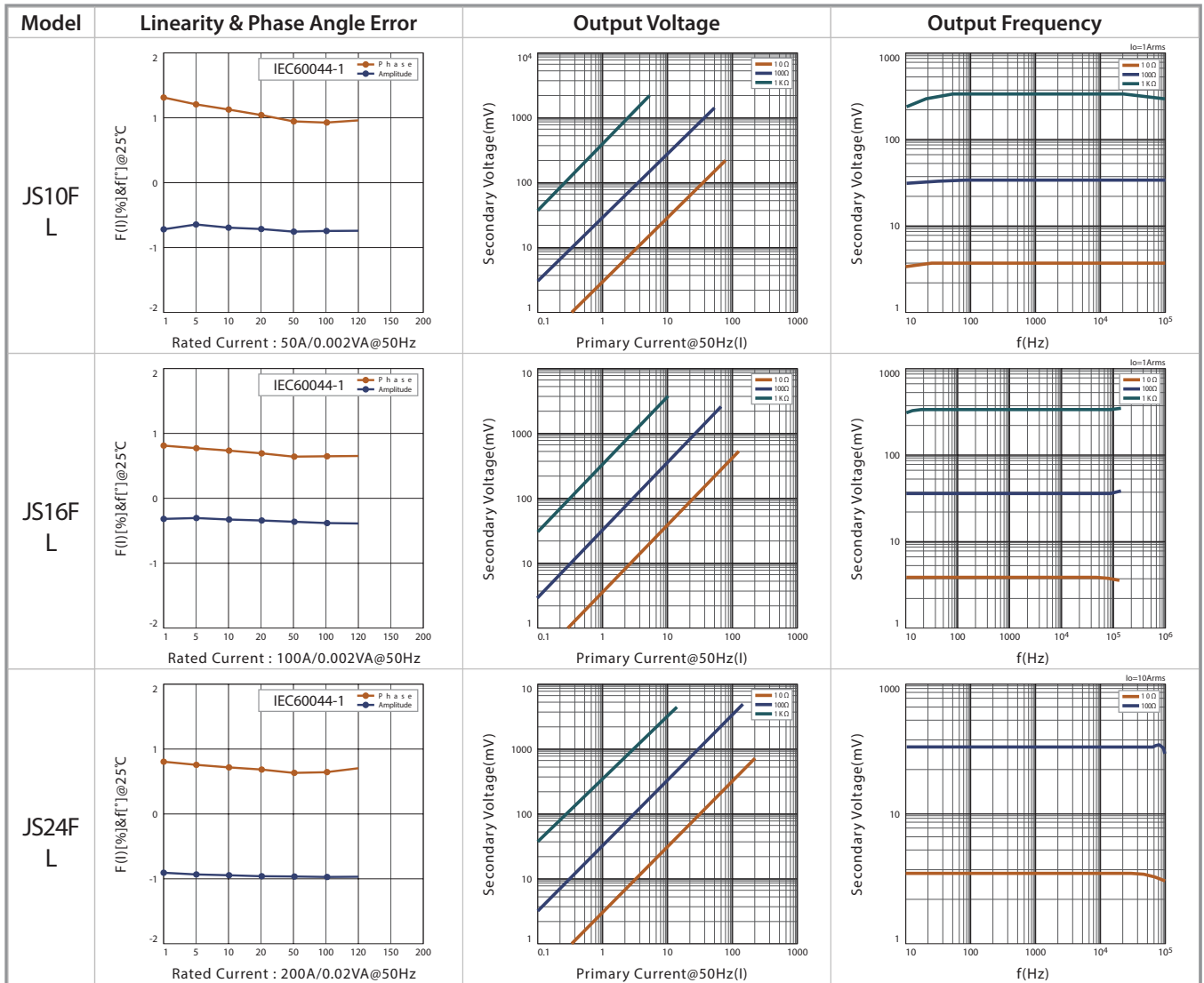
SPECIFICATION

(F=50/60Hz)

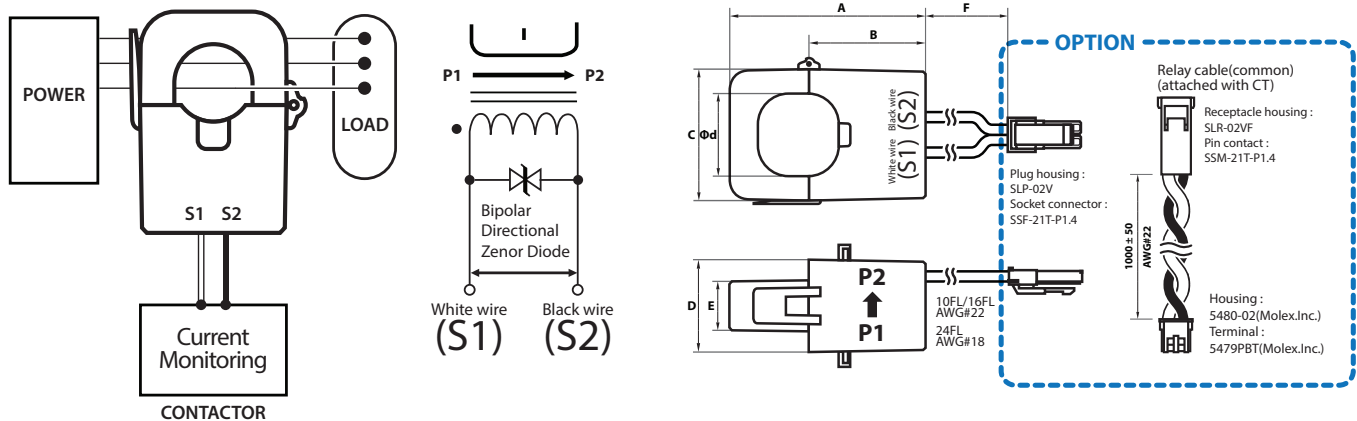
| Model | JS10FL Ø10 | JS16FL Ø16 | JS24FL Ø24 |
|---------------------------|--|-------------------|-------------------|
| Current Ratio | 50A/16.6mA | 100A/33.3mA | 200A/66.6mA |
| Current Range | 0.1~80A (RL=10Ω) | 0.1~120A (RL=10Ω) | 0.1~200A (RL=10Ω) |
| Max Continuous Current | 120A | 200A | 300A |
| Nominal Phase Angle Error | +1.5±1° | +1.0±1° | +1.0±1° |
| Nominal Linearity Error | -1±1% | -1±1% | -1±1% |
| Turns Ratio | 3000:1 | 3000:1 | 3000:1 |
| DCR | 360±25Ω | 280±20Ω | 171±15Ω |
| Protection Level | 7.5V0-P | 7.5V0-P | 7.5V0-P |
| Insulation Category | CATIII | | |
| Operating Condition | -20°C~+50°C, ≤85%RH, No condensation, In-house & Any direction installable | | |
| Storage Condition | -30°C~+90°C, ≤85%RH, No condensation | | |



ACCURACY DATA



APPLICATIONS / DIMENSIONS



| Model | A | B | C | D | E | F | Ød |
|--------|------|------|------|------|------|--------|----|
| JS10FL | 40.5 | 23 | 23.7 | 26.6 | 14.5 | 150±20 | 10 |
| JS16FL | 45 | 26 | 30 | 31.6 | 18.8 | 150±20 | 16 |
| JS24FL | 65 | 37.5 | 45 | 33.7 | 21.1 | 200±20 | 24 |

Unit : mm